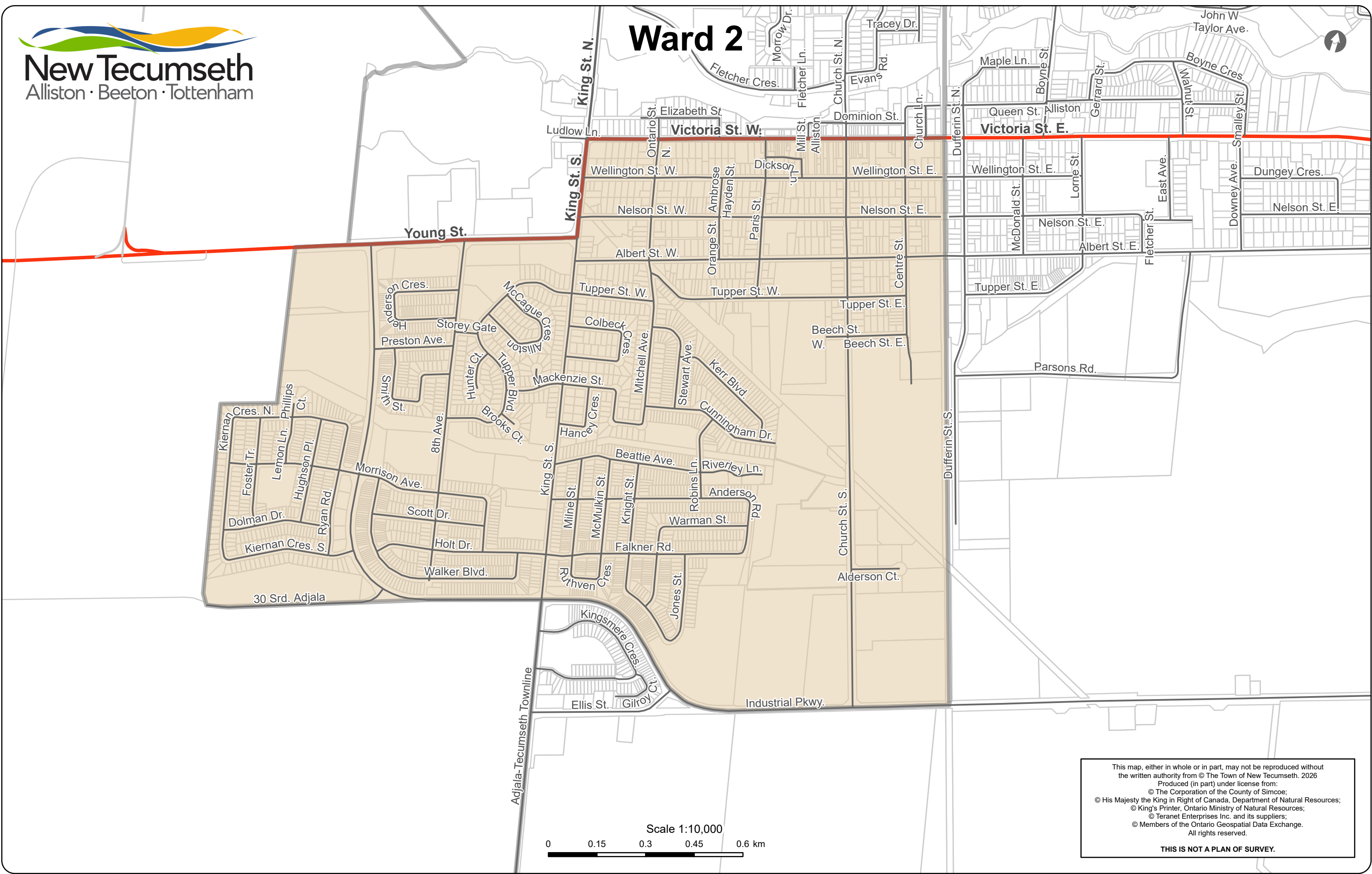
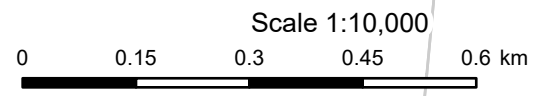


Ward 2



30 Srd. Adjala

Adjala-Tecumseth Townline



This map, either in whole or in part, may not be reproduced without the written authority from © The Town of New Tecumseth, 2026
Produced (in part) under license from:
© The Corporation of the County of Simcoe;
© His Majesty the King in Right of Canada, Department of Natural Resources;
© King's Printer, Ontario Ministry of Natural Resources;
© Teranet Enterprises Inc. and its suppliers;
© Members of the Ontario Geospatial Data Exchange.
All rights reserved.

THIS IS NOT A PLAN OF SURVEY.