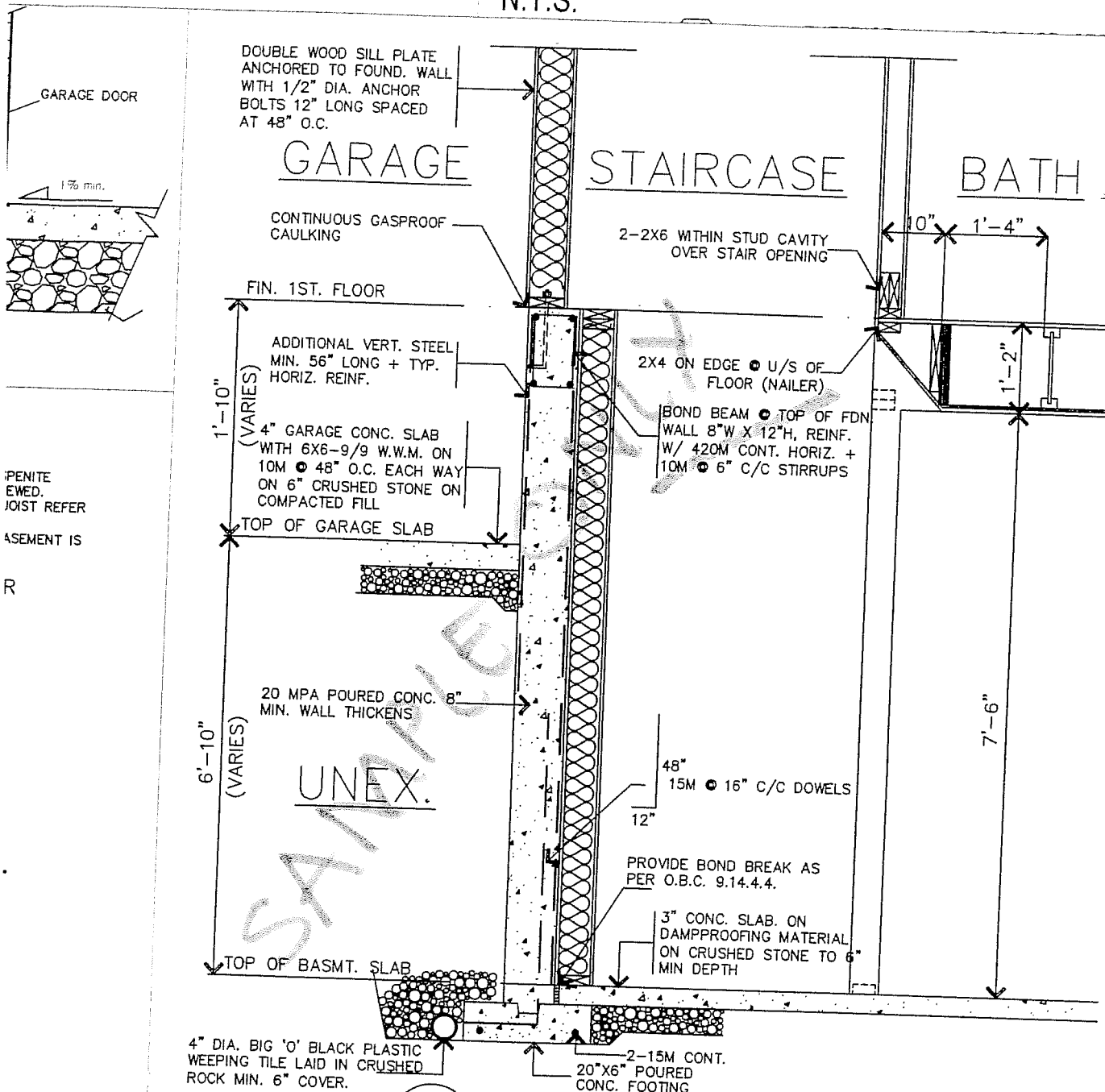


**REINFORCING FOR TYPICAL 8" THICK CONCRETE FOUNDATION WALL**  
 ( WHERE EXT. FIN. GRADE HT. EXCEEDS 6'-11" ABOVE TOP OF BASEMENT SLAB )  
 N.T.S.

**BLOCK SECTION B-B**  
**SCALE: 3/8" = 1'-0"**

ON TOP OF FOUNDATION WALL.  
 COLUMN PERMANENTLY FIXED AT TOP AND  
 BOTTOM.

**STEEL TELEPOST DETAIL**  
**N.T.S.**



4  
 A7  
 DETAIL OF WALL BETWEEN  
 STAIRCASE OPENING AND GARAGE

OCT 16'17
FEB 16'18

PROJECT:

DR

MISC. DETAILS

ISSUE DATE:  
**OCT, 2017**

SCALE:  
**1/4"=1'-0"**

DRAWN BY:  
**N.J.**

PROJECT NO.  
**#01702**

DRAWING NO.

**A-7**