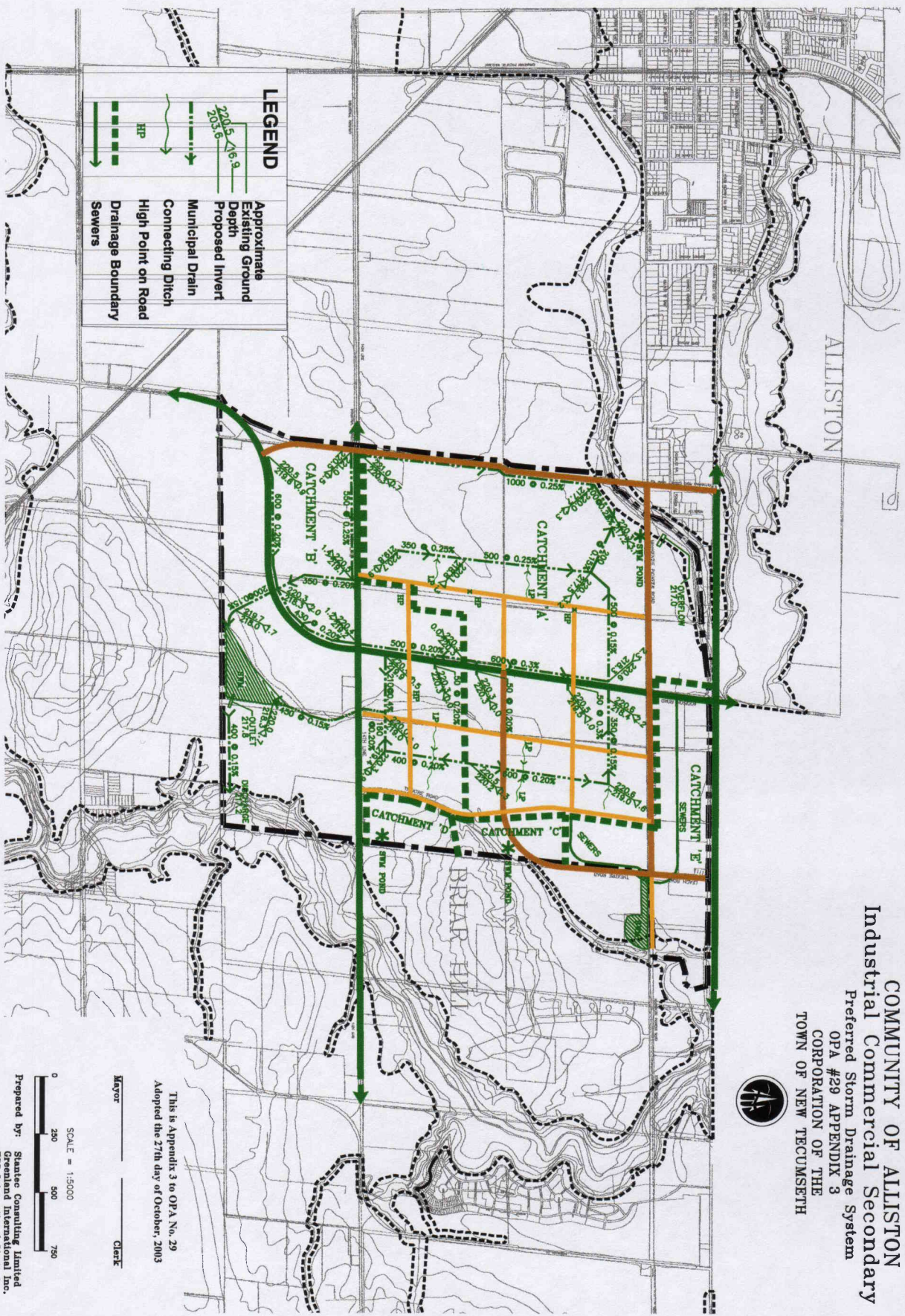


COMMUNITY OF ALLISTON
 Industrial Commercial Secondary Plan
 Preferred Storm Drainage System
 OPA #29 APPENDIX 3
 CORPORATION OF THE
 TOWN OF NEW TECUMSETH



LEGEND

	Approximate Existing Ground Depth
	Proposed Invert
	Municipal Drain
	Connecting Ditch
	High Point on Road
	Drainage Boundary
	Sewers

This is Appendix 3 to OPA No. 29
 Adopted the 27th day of October, 2003

SCALE = 1:5000

0 250 500 750

Prepared by: Stanlec Consulting Limited
 Greenland International Inc.
 ESG International Limited

The City of New Tecumseth is a registered trademark of the Corporation of the Town of New Tecumseth. All rights reserved. © 2003